

THAMES



On - Line, 6-10-15-20-30 kVA

The Thames series uninterruptible power supplies are true on-line devices featuring double-conversion topology, with three-phase input and single-phase output. They make use of Sinusoidal Pulse Width Modulation (SPWM) and Insulated Gate Bipolar Transistors (IGBT). Static bypass, maintenance bypass, and microprocessor control are standard on all models. SNMP and Web-based remote status monitoring is optionally available for these units. Thames series comes with maintenance-free dry type lead-acid batteries of different ratings and amounts to account for different autonomy times.

Features:

- True on-line topology with sinusoidal output
- SPWM and IGBT technology
- High reliability with smart-driver technology and microprocessor control
- LEDs for easy status monitoring
- 2-line, 16-character LCD displaying voltage, load and alarm information
- Cold start feature
- Automatic and manual battery test system
- Alarm logging
- Remote status monitoring and control via SNMP / HTTP / SMTP (*option*)
- Compatibility with major Network Management Systems (NMS) (*option*)
- ISO 9001 certified company
- 1-year warranty
- 10-years spare parts availability guarantee
- Year-round 24-hour emergency technical support



Uninterruptible Power Supply

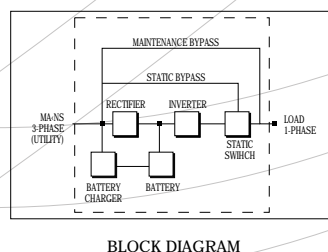
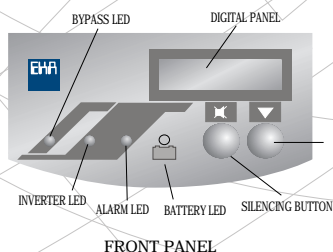
THAMES

TECHNICAL SPECIFICATIONS



MODEL	TH 306	TH 310	TH 315	TH 320	TH 330
POWER FACTOR	0,7				
POWER RATING	6kVA/4.8kW	10kVA/7kW	15kVA/10.5kW	20kVA/14kW	30kVA/21kW
INPUT	220/230/240 - 380/400/415 Vac, 3 - Phase				
	Voltage Tolerance +15% -20%				
	Frequency 50 / 60 Hz.				
	Frequency Tolerance ±5%				
BATTERY	Nominal String Voltage 192 Vdc		312 Vdc		
	Battery Type Maintenance-free, dry type				
	Recharge Capacity (~10 hours) 90% (if fully discharged)				
OUTPUT	220/230/240 Vac, 1 - Phase				
	Voltage Tolerance ±1%				
	Frequency 50 / 60 Hz.				
	Frequency Tolerance ±1% (synchronized operation)				
	Total Harmonic Distortion (THD) <3% (for linear loads)				
	Crest Factor 3:1				
	Overload Capacity 100% - 125% 2.5 minutes, 125% - 150% 10 seconds, over 150% bypass				
EFFICIENCY	Inverter >92%				
	Overall >85%				
TRANSFER TIME	0 msn				
STATUS MONITORING (LOCAL)	Liquid Crystal Display (LCD) "Input Voltage", "Battery Voltage", "Output Voltage", "Output Frequency", "Battery Voltage%", "Load%", "Alarms"				
	Light-Emitting Diodes (LED) "Load on bypass", "Load on UPS", "Alarm", "Batteries Discharging"				
	Alarms "Load on bypass", "Overload", "Mains Failure", "Output Voltage High/Low", "Overheat", "Battery Voltage High/Low", "Battery Failure", "Short-circuit"				
STATUS MONITORING (REMOTE)	RS-232 Port Monitoring and Control				
	Relay Contacts "Mains Failure", "Battery Low", "Load on bypass"				
	Supported Operating Systems UNIX, LINUX, NOVELL, OS/2, Windows 95/98/XP/NT/2000				
AUDIBLE ALARMS	Batteries Discharging Alarm sounding every 5 seconds.				
	Battery Low Last warnings, every 1 second.				
	UPS Fault Continuous beeping.				
ENVIRONMENTAL	Audible Noise (@ 1 m.) <55 dBA				
	Operating Temperature 0°C 40°C				
	Relative Humidity 0% - 90% (Non-condensing)				
DIMENSIONS	WxDxH (mm)		265x710x710	575x860x1070	575x860x1350
WEIGHT	Without Batteries (kg.)				
	150	170	210	250	

All specifications subject to change without notice. Consult EKA's technical support department for special applications. All names used above are registered trademarks of their respective owners.



Uninterruptible Power Supply



EKA ELEKTRONİK KONTROL ALETLERİ SANAYİ VE TİCARET A.Ş.
Dudullu Organize Sanayi Bölgesi - 2. Cadde No: 3 Ümraniye 81250 İstanbul Turkey
Tel: (+90216) 499 37 40 pbx, Fax: (+90216) 499 37 49 e-mail : eka@eka.com.tr, www.eka.com.tr
Ankara: Atatürk Bulvarı No: 59/22 Kızılay 06410 Ankara Tel: (+90312) 435 10 82 Fax: (+90312) 432 21 26

